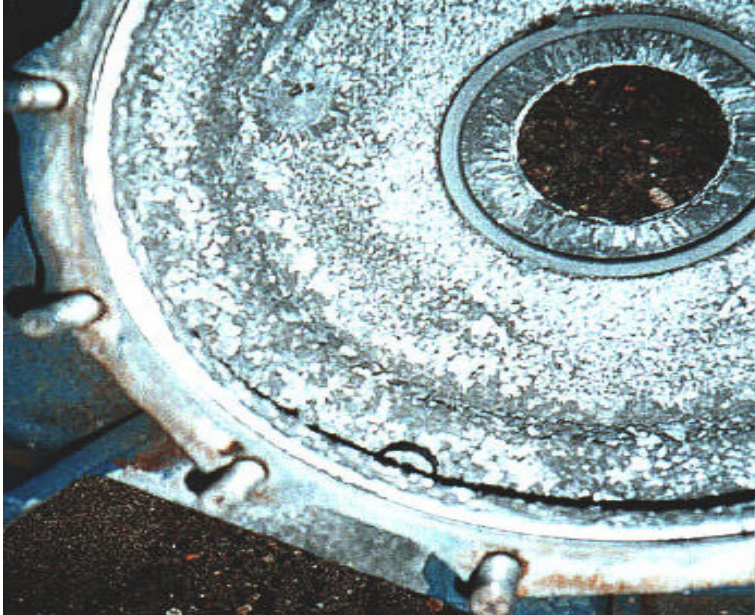




[www.unconventionalsolutions.biz](http://www.unconventionalsolutions.biz)

## Project: WWTP Rotary Sewage Pump Housing



### The Problem

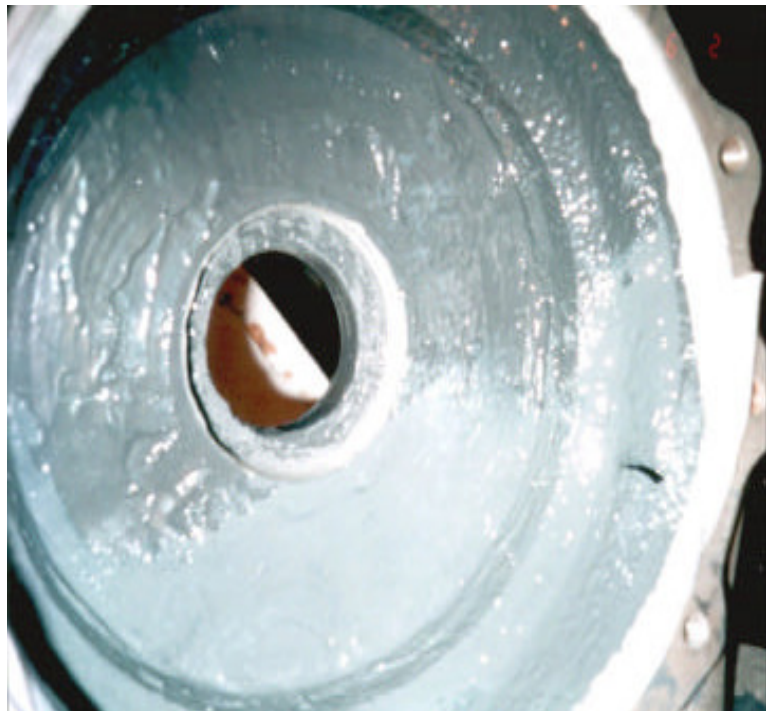
The Rotary Sewage Pump Housing at this Waste Water Treatment Plant was starting to wear and the company was looking for a way to protect it before serious damage occurred.

### Solution

Cerami-Tech EG is a high-performance, multi-purpose metal repair compound developed for rebuilding metal components in a fluid flow environment which have been damaged by corrosion and erosion. It is ideal for rebuilding pump bodies, impellers, propellers, guide vanes, valves, tube sheets, water boxes, rudders, heat exchangers, etc.

Cerami-Tech FG is the fluid grade formula that offers outstanding protection against impingement, entrainment, erosion and corrosion conditions.

Chemi-Tech UC is a high-performance, solvent-free, coating designed for use where exceptional resistance to chemical attack is needed even under total immersion conditions.



**Unconventional Solutions, Inc.**  
527 Union St.  
Milford, MI 48381  
(248) 685-7580  
[www.unconventionalsolutions.biz](http://www.unconventionalsolutions.biz)