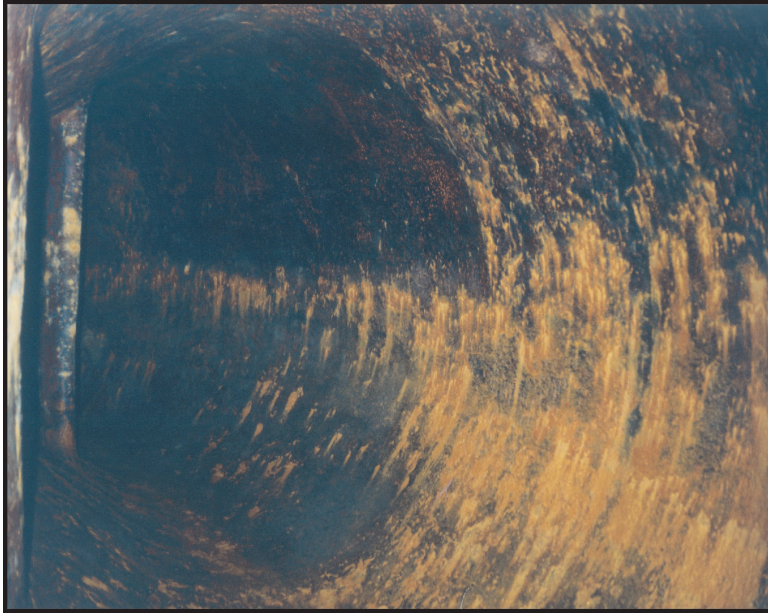




www.unconventionalsolutions.biz

Project: Scroll Case Refurbishment



The Problem

Thousands of liters of water had been continually pumped through the scroll, which was 120ft. long and had a diameter of 12 feet, to service the requirements of the hydro-electric power station.

The internal surfaces, totaling 1230 sq. ft., had deteriorated significantly due to the volume of water and high level of use. It was now in need of complete refurbishment.

Solution

The Cerami-Flex system was selected for this application. A total of 1118 lbs of Cerami-Tech EG were first trowel applied and then a stiff bristled angled paint brush was used to smooth out the high spots and uneven areas. A thickness of 750 microns was achieved.

In order to achieve the required finish, the surface of the Cerami-Flex EG was sandblasted. After removing resultant dust, a thin coat of Cerami-Flex FG was roller applied over the entire surface.

Cerami-Flex EG and FG are solvent free, polyceramic repair and resurfacing systems, which offer outstanding protection against impingement, entrainment, cavitation, erosion and corrosion. They are ideal for protecting equipment operating in aggressive fluid flow environments.



Unconventional Solutions, Inc.

527 Union St.

Milford, MI 48381

(248) 685-7580

www.unconventionalsolutions.biz