



[www.unconventionalsolutions.biz](http://www.unconventionalsolutions.biz)

## Project: Processing Pump Refurbishment



### The Problem

The pumps used by this processing company were in poor condition. The efficiency of their operation was now being affected and the pumps therefore required rebuilding or replacing.

Clearly, the most cost effective solution was to rebuild the pumps before their condition deteriorated to the level where they were beyond repair.

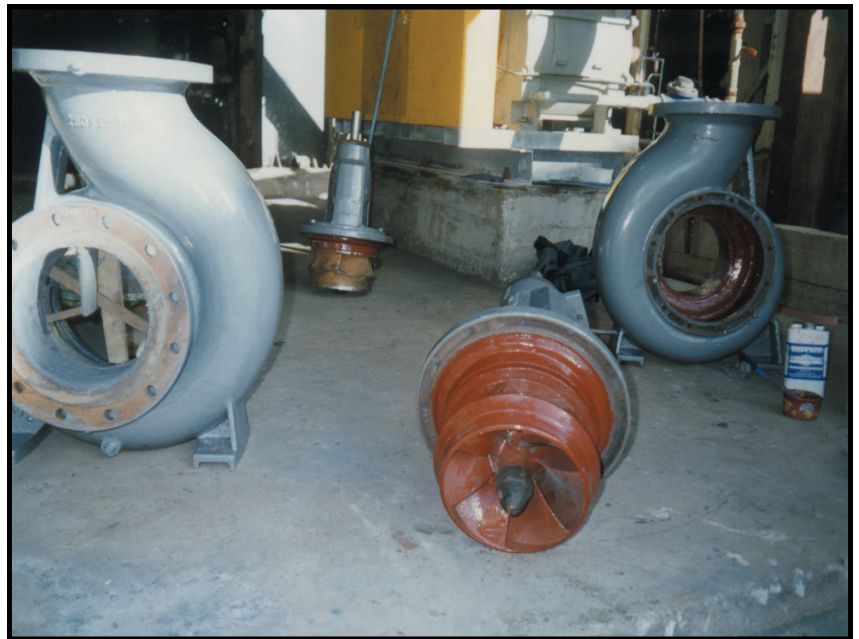
### Solution

The pumps were first blast cleaned and the corroded areas inside the pumps were rebuilt with Cerami-Tech EG.

Once this had cured, the internal surfaces of the pumps were lined with two coats of Cerami-Tech CR, a low friction corrosion resistant lining.

In most cases, the external surfaces of the pumps were coated with two coats of Corro-Tech GP.

The customer is delighted with the finish and performance and has adopted this system for all pump refurbishments.



**Unconventional Solutions, Inc.**  
**527 Union St.**  
**Milford, MI 48381**  
**(248) 685-7580**  
**[www.unconventionalsolutions.biz](http://www.unconventionalsolutions.biz)**