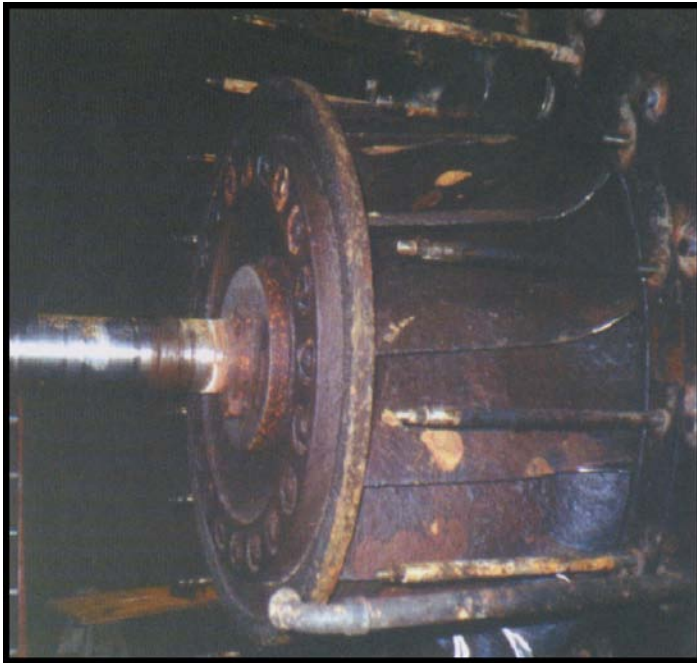




www.unconventionalsolutions.biz

Project: Turbine Refurbishment



The Problem

This turbine was originally built in 1923 and was used in a hydro-electric power plant.

As is apparent from the photograph, the whole turbine was badly worn after years of use without protection. A protective coating was required to protect the equipment from future erosion, corrosion and cavitation attack.

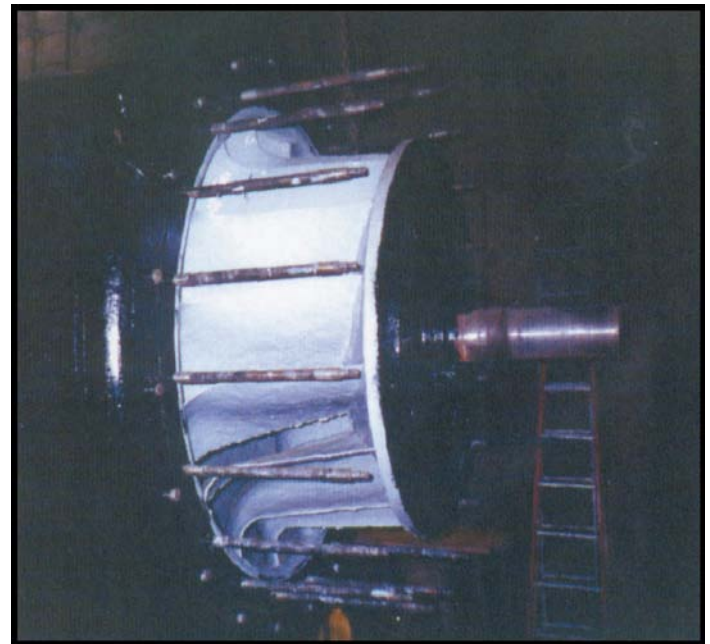
Solution

The turbine was dismantled and all metal surfaces were abrasive blasted to SA2 1/2.

All blasted surfaces were then coated with Cerami-Flex EG which was applied at approximately 1mm.

The outlet channel was blasted and coated with Chemi-Tech PU.

The turbine was then reassembled and put back into service.



Unconventional Solutions, Inc.
527 Union St.
Milford, MI 48381
(248) 685-7580
www.unconventionalsolutions.biz