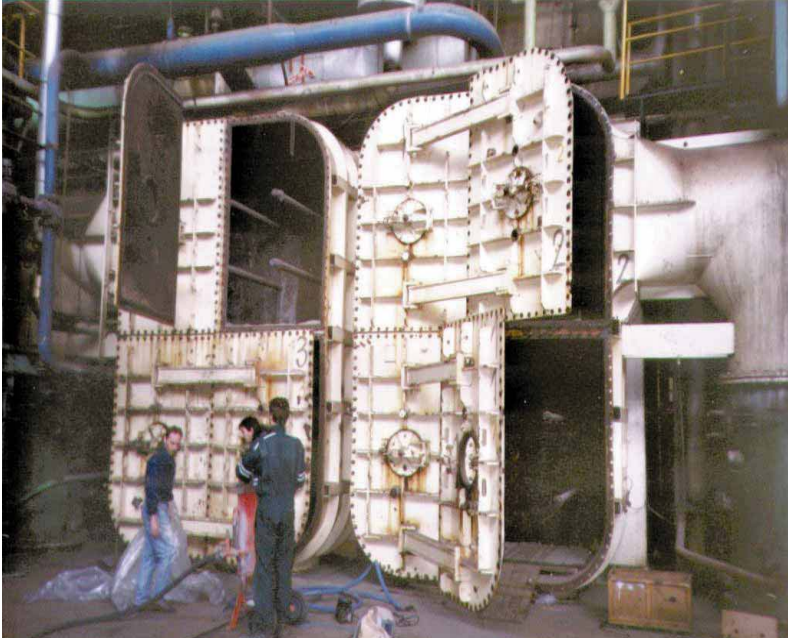




www.unconventionalsolutions.biz

Project: Heat Exchanger Refurbishment



The Problem

This Power Station has four heat exchangers, each of which comprises four 60ft. tube sheets. The power generation company, which runs the plant, had planned to refurbish one of these heat exchanger tube sheets as part of its ongoing maintenance program.

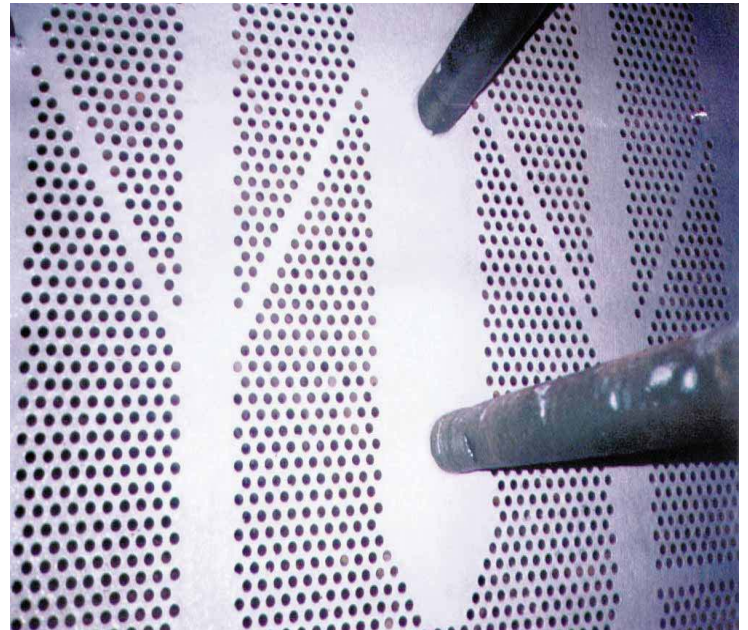
3M Thortex was asked to provide a high performance engineering repair solution, using one of its ceramic resurfacing systems.

Solution

All dust and loose material was scraped away. The surface of the heat exchanger tube sheet was then abrasive blast cleaned to a minimum industry standard of Sa2^{1/2}. As the tube sheet was in relatively good condition with no deeply pitted areas, two coats of Cerami-Tech FG were applied directly to the blasted surface.

Our multi-purpose ceramic epoxy Cerami-Tech EG can be used prior to application of Cerami-Tech FG, if the surface of such a piece of equipment requires rebuilding.

Cerami-Tech FG is a two component, ceramic-enhanced, fluid grade epoxy resurfacing compound which offers outstanding protection against impingement, entrainment, cavitation and erosion/corrosion in aggressive fluid flow environments.



Unconventional Solutions, Inc.

527 Union St.

Milford, MI 48381

(248) 685-7580

www.unconventionalsolutions.biz