



www.unconventionalsolutions.biz

Project: Gate Valve Repair



The Problem

The surfaces of the gate valve shown in this photograph had been subjected to severe erosion and corrosion as a result of the very aggressive operating conditions.

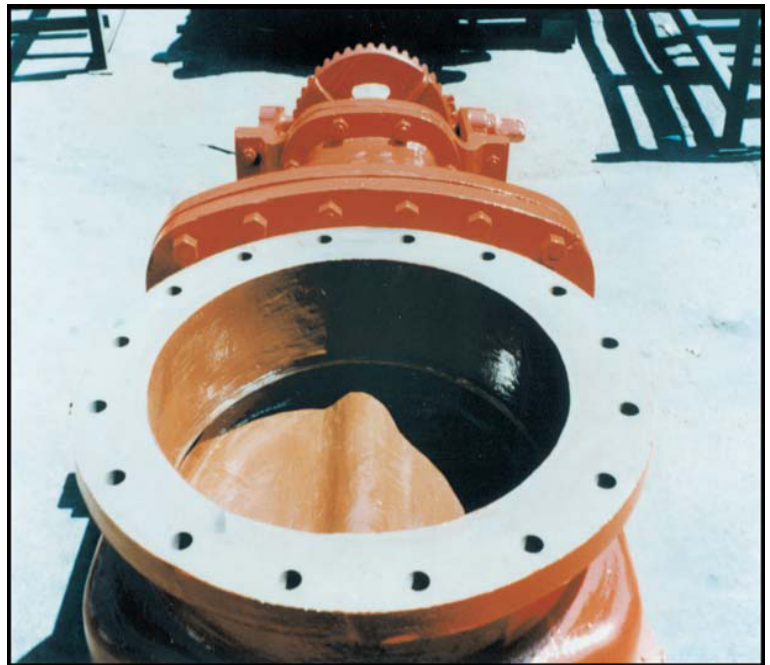
Immediate repairs were required to extend the life of this expensive piece of equipment.

Solution

All loose material was scraped away. The surfaces were then blast cleaned to a minimum industry standard of Sa2½. Our multi-purpose ceramic epoxy Cerami-Tech EG was used to rebuild the internal surfaces of the gate valve, after which Cerami-Tech CR was applied.

Cerami-Tech CR is a solvent-free epoxy coating which provides a smooth, low friction finish as well as optimum levels of physical & mechanical strength and superior resistance to erosion and corrosion.

Cerami-Tech CR also has approval for contact with potable water.



Unconventional Solutions, Inc.

527 Union St.

Milford, MI 48381

(248) 685-7580

www.unconventionalsolutions.biz