



Hot Topics

October 2009



Spook all of your projects out of the cracks before the projects boo your building!



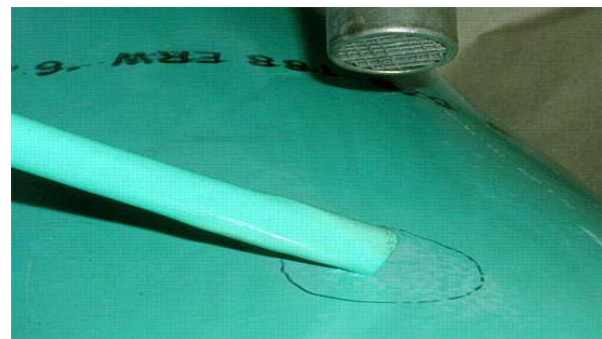
This is a project that we had done last fall before the weather turned cold in Flint, Michigan. This Condensate Tank was protected with 2 coats of Chemi Tech UC. It is still in service today. Please call us today **(248) 685-7580** for a Technical Sales Consultant to come evaluate your tank or other projects that you may have lingering around your grounds or building or visit www.unconventionalsolutions.biz.

Fall is the time of year to be thinking and planning for the end of the year projects!

3M Scotchkote Hot Melt Patch Compound 226P is a heat bondable polymeric coating in stick form designed for plant and field repair of Scotchkote Fusion Bonded Epoxy Coatings. Scotchkote Hot Melt Patch Compound 226P is ideal for repairing minor pinholes and abrasions. Scotchkote 226P can be used on holidays up to 2 mm in diameter. The following **3M** two-part epoxies should be used for bare steel areas larger than pinholes, depending on the functional and application properties required: Scotchkote 323, Scotchkote 323i, and Scotchkote 352.

Features

- Easy to apply
- Usable in all weather conditions
- Quick setting for immediate installation
- No solvents
- No mixing, metering, or pot life problem
- Flexible
- Maximum operating temperature 122°F
- Patch sticks are used to repair pin holes



Thoughts from the President

October is the change of seasons when baseball wraps up with the World Series and football season heats up. So, being the 4th quarter it is time to start your final coating projects for the year. We have many systems that can be used for cooler weather or ask about ways to tent the area. Also, we can help you with flooring or tank repairs that can be done year round.

Halloween is on Saturday this year, so make sure you have lots of candy, and watch for children if you're out and about.

Warm Regards,

Doug Klingensmith

(248) 685-7580 www.unconventionalsolutions.biz

